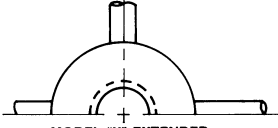


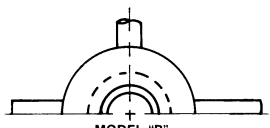
MODEL "A" HUB STRAIGHT BORE

HUB O.D.	MAX* BORE	MAX. NO. BLADES
8.0"	3.000"	6



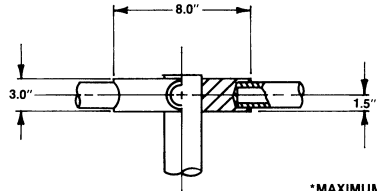
MODEL "X" EXTENDED "QD" BUSHING HUB

HUB O.D.	MAX* BORE	MAX** BORE	MAX. NO. BLADES	BUSHING	DIM. "F"	DIM. "G"
8.0"	2.313	2.688" (60 mm)	6	SF	5.3"	2.1"
8.0"	2.875	3.50" (80 mm)	6	E	5.5"	2.7"

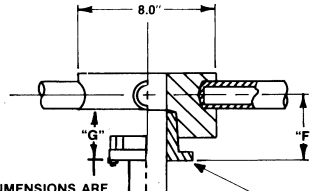


MODEL "B" "QD" BUSHING HUB

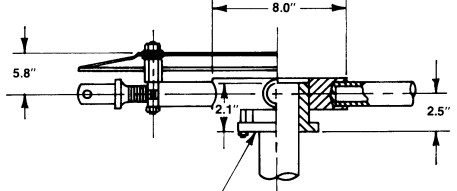
HUB O.D.	MAX* BORE	MAX** BORE	MAX. NO. BLADES	BUSHING
8.0"	2.313	2.688" (60 mm)	6	SF



SHAFT BY OTHERS SHOULD GO COMPLETELY THROUGH HUB OR "QD" BUSHING



*MAXIMUM BORE DIMENSIONS ARE WITH U.S. STANDARD SQUARE KEY
 **MAXIMUM BORE DIMENSIONS ARE WITH U.S. STANDARD SHALLOW KEYWAY



MODEL "QD" BUSHING

LETTER DIMENSIONS MAY VARY WITH BLADE ANGLE AND LOADING

NOTES		WITH FAN OPERATING AT 12000 FT./MINUTE BLADE TIP SPEED						
				PERCENT OF BLADE LOAD		DIM C	DIM D	DIM E
		FAN DIA.	DIM A	100%	75%			
				DIM B				
		4'	3.6"	1.5"	1.4"	3.2"	1.0"	.05"
		5'	3.0"	1.7"	1.5"	3.2"	1.0"	.06"
		6'	2.4"	2.0"	1.7"	3.7"	1.1"	.07"
		7'	1.8"	2.5"	2.0"	4.3"	1.3"	.09"
		8'	1.4"	3.0"	2.4"	4.9"	1.5"	.11"
		9'	1.1"	3.8"	3.0"	5.6"	1.7"	.16"
		10'	.9"	4.7"	3.7"	6.2"	1.9"	.22"

SERIES 27 PRESSURE BLOWER



MANUAL ADJUSTMENT ARRANGEMENT M

CLASS 5000