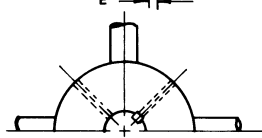


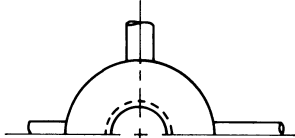
DIM "A" EQUALS BLADE THICKNESS AT TIP AT 10° CLEVIS ANGLE
 DIM "B" EQUALS RUNNING DROOP OF BLADES
 DIM "C" EQUALS STOP DROOP OF BLADES
 NOTE #1
 FOR OBSTRUCTIONS NEARER THAN 12" ABOVE BLADE TUBE C₁ AT BLADE TIP, CONSULT FACTORY.

DIM "E" EQUALS DECREASE FROM MAXIMUM RADIUS OF BLADE (HORIZONTAL) TO RUNNING DROOP.

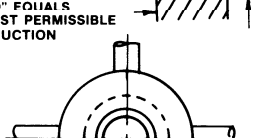
DIM "D" EQUALS NEAREST PERMISSIBLE OBSTRUCTION



MODEL "A" HUB STRAIGHT BORE



MODEL "X" EXTENDED "QD" BUSHING HUB

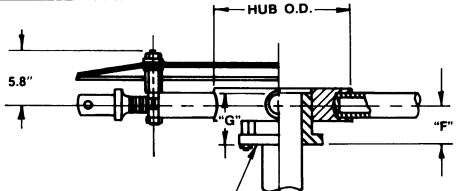
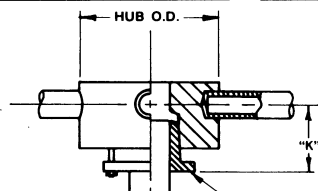
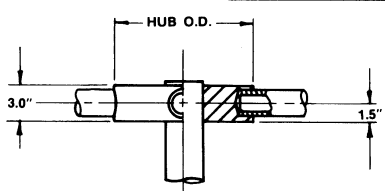


MODEL "B" "QD" BUSHING HUB

HUB O.D.	MAX. BORE	MAX. NO. BLADES
8.0"	3.000"	6
9.0"	4.000"	7

HUB O.D.	MAX. BORE	MAX. BORE	MAX. NO. BLADES	BUSHING	DIM. "K"
8.0"	2.313	2.688" (60 mm)	6	SF	5.3"
8.0"	2.875	3.50" (80 mm)	6	E	5.5"
9.0"	2.875	3.50" (80 mm)	7	E	5.5"

HUB O.D.	MAX. BORE	MAX. BORE	MAX. NO. BLADES	BUSHING	DIM. "F"	DIM. "G"
8.0"	2.313	2.688" (60 mm)	6	SF	2.5"	2.1"
9.0"	2.313	2.688" (60 mm)	7	SF	2.5"	2.1"
9.0"	2.875	3.50" (80 mm)	7	E	2.8"	2.7"



SHAFT BY OTHERS SHOULD GO COMPLETELY THROUGH HUB OR "QD" BUSHING

*MAXIMUM BORE DIMENSIONS ARE WITH U.S. STANDARD SQUARE KEY
 **MAXIMUM BORE DIMENSIONS ARE WITH U.S. STANDARD SHALLOW KEYWAY

MODEL "QD" BUSHING

LETTER DIMENSIONS MAY VARY WITH BLADE ANGLE AND LOADING

NOTES		WITH FAN OPERATING AT 12000 FT./MINUTE BLADE TIP SPEED							
		PERCENT OF BLADE LOAD							
		FAN DIA.	DIM A	DIM B		DIM C	DIM D	DIM E	
				100%	75%				
		5"	5.2"	1.9"	1.7"	3.2"	1.0"	.07"	
		6"	4.4"	2.2"	1.9"	3.9"	1.2"	.09"	
		7"	4.0"	2.7"	2.3"	4.5"	1.4"	.11"	
		8"	3.2"	3.2"	2.6"	5.2"	1.6"	.14"	
		9"	2.5"	3.8"	3.0"	5.8"	1.8"	.17"	
		10"	2.1"	4.4"	3.5"	6.5"	2.0"	.20"	
		11"	1.9"	5.1"	4.1"	7.2"	2.2"	.24"	
		12"	1.7"	6.0"	4.7"	7.9"	2.4"	.30"	

SERIES 33 PRESSURE BLOWER



MANUAL ADJUSTMENT ARRANGEMENT M

CLASS 5000

COMPANY