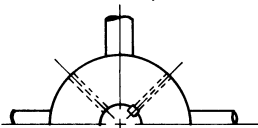
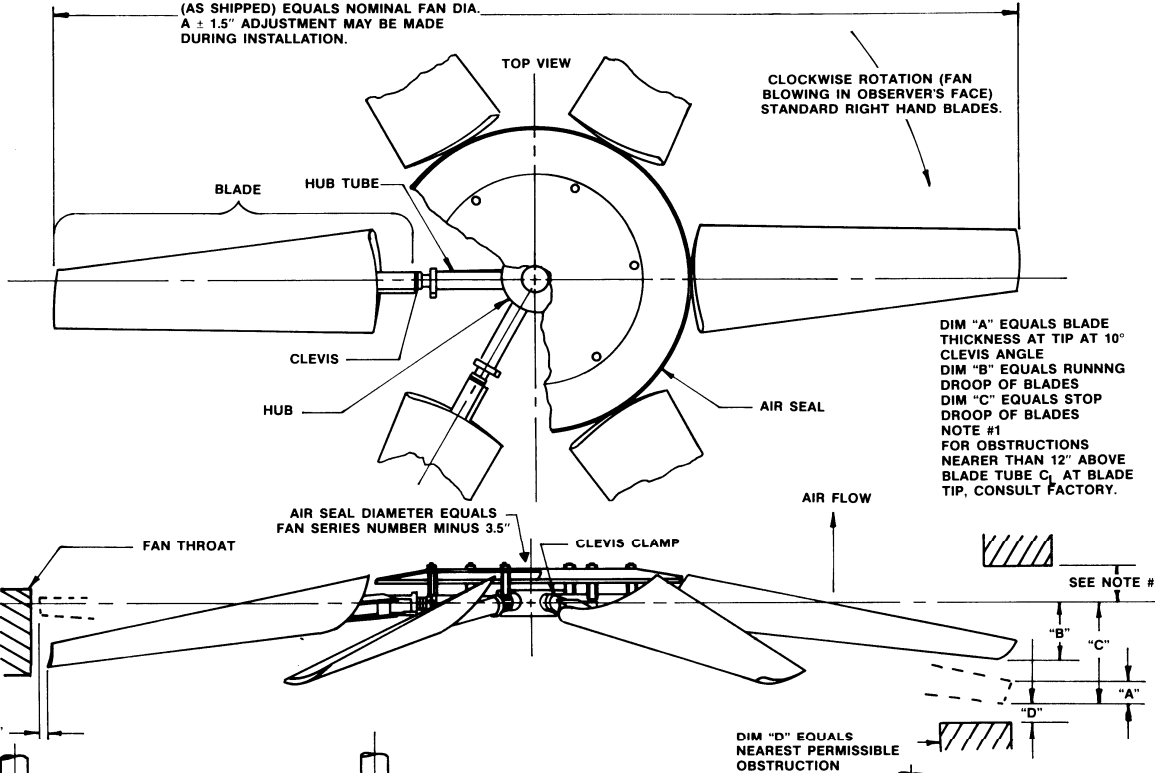
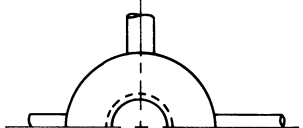


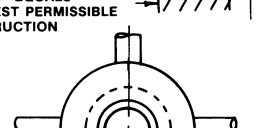
MAXIMUM FAN DIA. BLADES HORIZONTAL (AS SHIPPED) EQUALS NOMINAL FAN DIA. A ± 1.5" ADJUSTMENT MAY BE MADE DURING INSTALLATION.



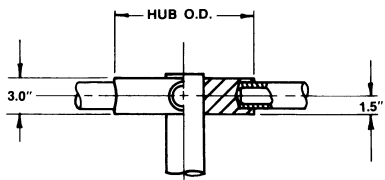
HUB O.D.	MAX. BORE	MAX. NO. BLADES
8.0"	3.000"	6
9.0"	4.000"	8



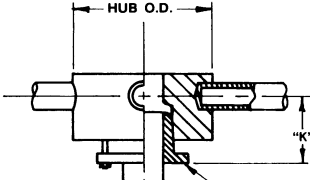
HUB O.D.	MAX. BORE	MAX. BORE	MAX. NO. BLADES	BUSHING	DIM. "K"
8.0"	2.313	2.688" (80 mm)	6	SF	5.3"
8.0"	2.875	3.50" (80 mm)	6	E	5.5"
9.0"	2.875	3.50" (80 mm)	8	E	5.5"



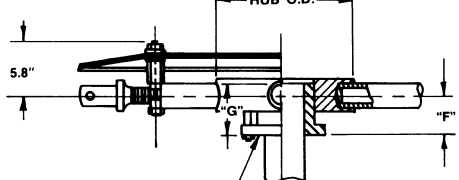
HUB O.D.	MAX. BORE	MAX. BORE	MAX. NO. BLADES	BUSHING	DIM. "F"	DIM. "G"
8.0"	2.313	2.688" (80 mm)	6	SF	2.5"	2.1"
9.0"	2.313	2.688" (80 mm)	8	SF	2.5"	2.1"
9.0"	2.875	3.50" (80 mm)	8	E	2.8"	2.7"



SHAFT BY OTHERS SHOULD GO COMPLETELY THROUGH HUB OR "QD" BUSHING



*MAXIMUM BORE DIMENSIONS ARE WITH U.S. STANDARD SQUARE KEY
 **MAXIMUM BORE DIMENSIONS ARE WITH U.S. STANDARD SHALLOW KEYWAY



MODEL "QD" BUSHING

LETTER DIMENSIONS MAY VARY WITH BLADE ANGLE AND LOADING

NOTES

WITH FAN OPERATING AT 12000 FT./MINUTE BLADE TIP SPEED

FAN DIA.	DIM A	PERCENT OF BLADE LOAD		DIM C	DIM D	DIM E
		100%	75%			
6'	3.0"	2.2"	1.9"	4.4"	1.3"	.10"
7'	2.7"	2.8"	2.3"	5.3"	1.6"	.13"
8'	2.2"	3.3"	2.8"	6.2"	1.9"	.17"
9'	1.7"	4.0"	3.2"	7.1"	2.1"	.20"
10'	1.4"	4.8"	3.8"	8.1"	2.4"	.25"
11'	1.3"	5.6"	4.4"	9.0"	2.7"	.31"
12'	1.2"	6.6"	5.2"	10.0"	3.0"	.38"
13'	1.1"	7.7"	6.0"	11.0"	3.3"	.47"
14'	1.0"	8.9"	7.0"	11.9"	3.6"	.59"

SERIES 40 PRESSURE BLOWER



MANUAL ADJUSTMENT ARRANGEMENT M

CLASS 5000