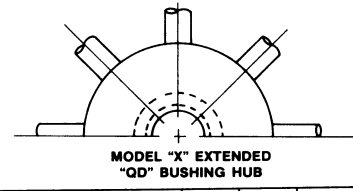
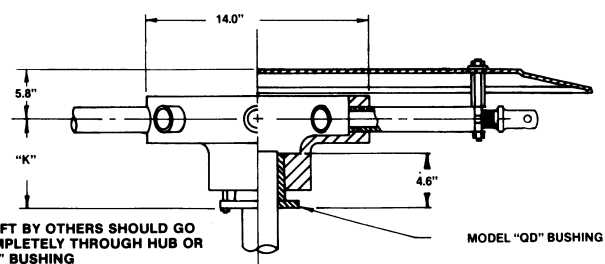


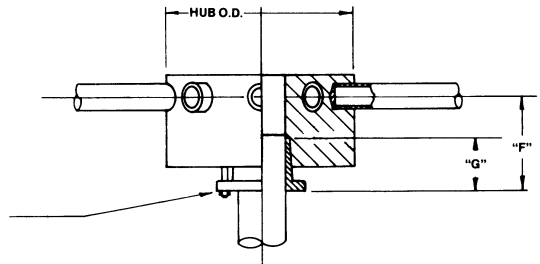
HUB O.D.	MAX* BORE	MAX. NO. BLADES	BUSHING	DIM "K"
14.0"	3.750"	10	J	8.0" or 12.0"



HUB O.D.	MAX. NO. BLADES	BUSHING	DIM. "F"	DIM. "G"	MAX* BORE	MAX** BORE
8.0"	6	SF	5.3"	2.1"	2.313	2.568" (60 mm)
8.0"	6	E	5.5"	2.7"	2.875	3.50" (80 mm)
9.0"	8	E	5.5"	2.7"	2.875	3.50" (80 mm)



SHAFT BY OTHERS SHOULD GO COMPLETELY THROUGH HUB OR "QD" BUSHING
 *MAXIMUM BORE DIMENSIONS ARE WITH U.S. STANDARD SQUARE KEY
 **MAXIMUM BORE DIMENSIONS ARE WITH U.S. STANDARD SHALLOW KEYWAY



LETTER DIMENSIONS MAY VARY WITH BLADE ANGLE AND LOADING

NOTES	WITH FAN OPERATING AT 12000 FT./MINUTE BLADE TIP SPEED						
	FAN DIA.	DIM A	PERCENT OF BLADE LOAD		DIM C	DIM D	DIM E
			100%	75%			
	8'	4.0"	3.4"	2.9"	6.3"	1.9"	.20"
	9'	3.8"	4.1"	3.4"	7.4"	2.2"	.24"
	10'	3.4"	4.8"	3.9"	8.4"	2.5"	.29"
	11'	3.2"	5.6"	4.5"	9.5"	2.8"	.33"
	12'	2.7"	6.4"	5.1"	10.6"	3.2"	.39"
	13'	2.5"	7.2"	5.8"	11.6"	3.5"	.45"
	14'	2.3"	8.2"	6.5"	12.7"	3.8"	.52"
	15'	2.0"	9.2"	7.3"	13.8"	4.1"	.61"
	16'	1.7"	10.3"	8.2"	14.9"	4.5"	.71"

SERIES 49 PRESSURE BLOWER



ARRANGEMENT M
 MANUAL ADJUSTMENT

CLASS 5000