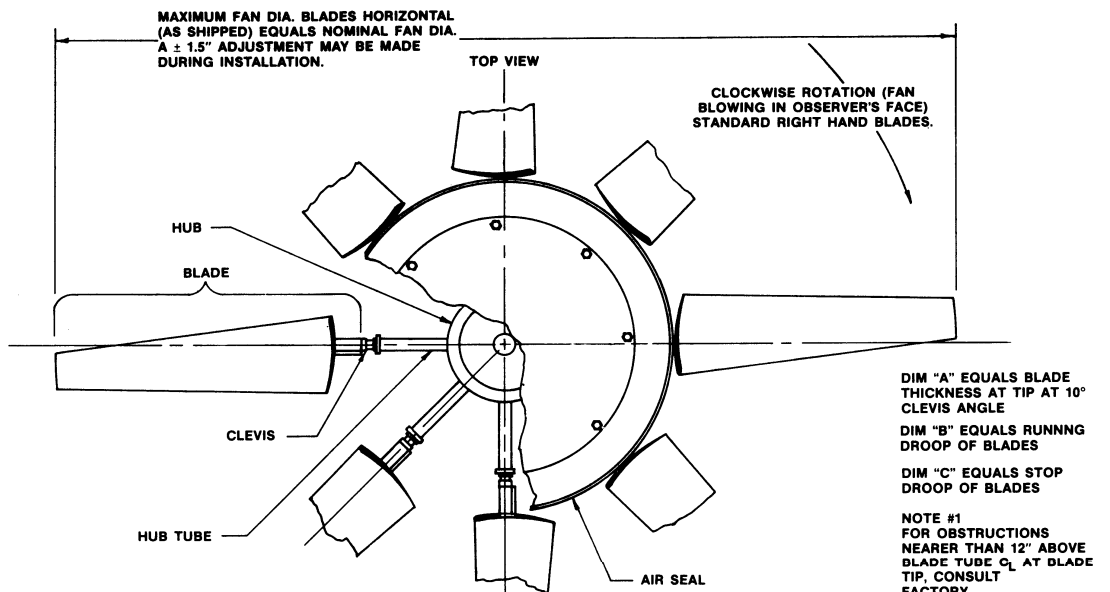
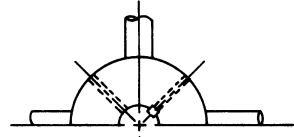
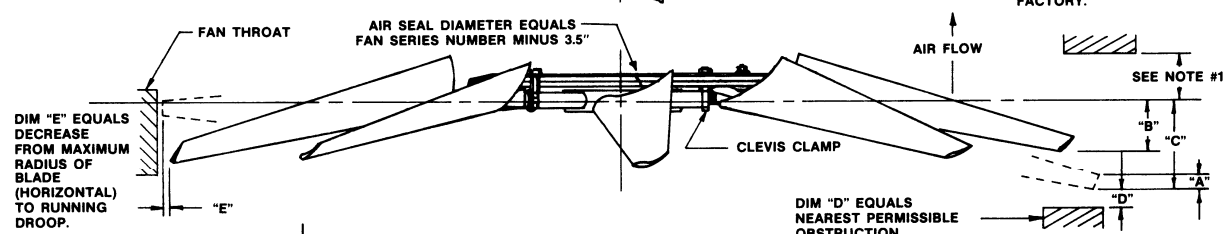


CLASS 5000 12000 RPM 60-0-1420-020

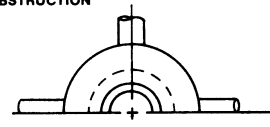


DIM "A" EQUALS BLADE THICKNESS AT TIP AT 10° CLEVIS ANGLE  
 DIM "B" EQUALS RUNNING DROOP OF BLADES  
 DIM "C" EQUALS STOP DROOP OF BLADES  
 NOTE #1  
 FOR OBSTRUCTIONS NEARER THAN 12" ABOVE BLADE TUBE CL AT BLADE TIP, CONSULT FACTORY.



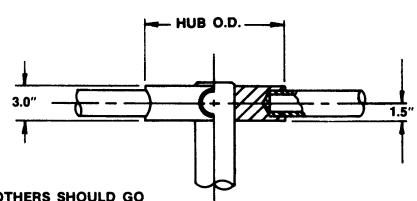
MODEL "A" HUB STRAIGHT BORE

HUB O.D.	MAX. BORE	MAX. NO. BLADES
9.0"	4.00"	8
12.0"	5.50"	12

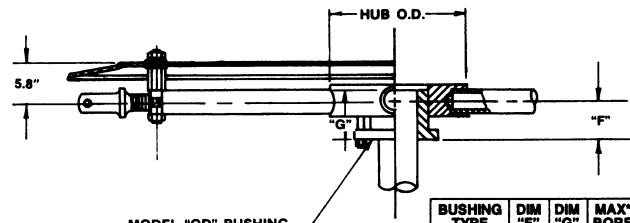


MODEL "B" "QD" BUSHING HUB

HUB O.D.	MAX. NO. BLADES	BUSHINGS AVAILABLE
9.0"	8	E
12.0"	12	E, J



SHAFT BY OTHERS SHOULD GO COMPLETELY THROUGH HUB OR "QD" BUSHING  
 \*MAXIMUM BORE DIMENSIONS ARE WITH U.S. STANDARD SQUARE KEY  
 \*\*MAXIMUM BORE DIMENSIONS ARE WITH U.S. STANDARD SHALLOW KEYWAY



MODEL "QD" BUSHING

BUSHING TYPE	DIM "F"	DIM "G"	MAX. BORE	MAX. BORE
E	2.8"	2.7"	2.875"	3.50"(80mm)
J	3.2"	4.6"	3.750"	4.50"(100mm)

LETTER DIMENSIONS MAY VARY WITH BLADE ANGLE AND LOADING

NOTES	WITH FAN OPERATING AT 12000 FT./MINUTE BLADE TIP SPEED						
			PERCENT OF BLADE LOAD		DIM C	DIM D	DIM E
	FAN DIA.	DIM A	100%	75%			
	9'	4.2"	4.1"	3.3"	8.7"	2.8"	.28"
	10'	3.9"	4.9"	4.0"	10.2"	3.1"	.34"
	11'	3.4"	5.8"	4.7"	11.8"	3.5"	.40"
	12'	3.1"	6.7"	5.3"	13.3"	4.0"	.48"
	13'	2.8"	7.7"	6.1"	14.9"	4.5"	.56"
	14'	2.4"	8.7"	6.9"	16.4"	4.9"	.66"
	15'	2.2"	9.9"	7.8"	18.0"	5.4"	.77"
	16'	2.0"	11.2"	8.8"	19.6"	5.9"	.89"

**SERIES 60 PRESSURE BLOWER**



ARRANGEMENT M  
 MANUAL ADJUSTMENT

CLASS 5000