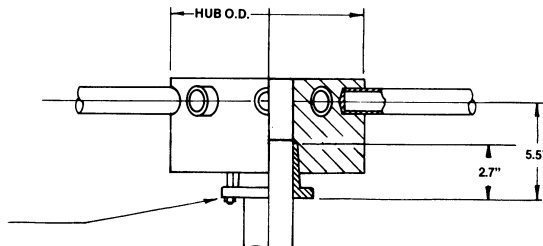
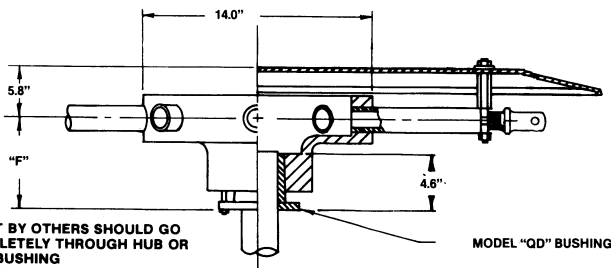


MODEL "B" EXTENDED "QD" BUSHING HUB

HUB O.D.	MAX. NO. BLADES	BUSHING	MAX.* BORE	MAX.** BORE	DIM. "K"
14"	12	J	3.75"	4.5" (100 MM)	8" OR 12"
17"	12	E	2.875"	3.5" (75 MM)	8"
17"	12	J	3.75"	4.5" (100 MM)	8"
24"	12	J	3.75"	4.5" (100 MM)	12"
24"	12	M	4.75"	5.5"	12"

MODEL "X" EXTENDED "QD" BUSHING HUB

HUB O.D.	MAX. NO. BLADES	BUSHING	MAX.* BORE	MAX.** BORE
9.0"	8	E	2.875"	3.50" (80mm)



SHAFT BY OTHERS SHOULD GO COMPLETELY THROUGH HUB OR "QD" BUSHING

*MAXIMUM BORE DIMENSIONS ARE WITH U.S. STANDARD SQUARE KEY

**MAXIMUM BORE DIMENSIONS ARE WITH U.S. STANDARD SHALLOW KEYWAY

LETTER DIMENSIONS MAY VARY WITH BLADE ANGLE AND LOADING

NOTES		WITH FAN OPERATING AT 12000 FT./MINUTE BLADE TIP SPEED						
		PERCENT OF BLADE LOAD						
		FAN DIA.	DIM A	DIM B		DIM C	DIM D	DIM E
				100%	75%			
	9'	4.2"	4.1"	3.3"	8.7"	2.6"	.28"	
	10'	3.9"	4.9"	4.0"	10.2"	3.1"	.34"	
	11'	3.4"	5.8"	4.7"	11.8"	3.5"	.40"	
	12'	3.1"	6.7"	5.3"	13.3"	4.0"	.48"	
	13'	2.8"	7.7"	6.1"	14.9"	4.5"	.56"	
	14'	2.4"	8.7"	6.9"	16.4"	4.9"	.66"	
	15'	2.2"	9.9"	7.8"	18.7"	5.4"	.77"	
	16'	2.0"	11.2"	8.8"	19.6"	5.9"	.89"	

SERIES 60 PRESSURE BLOWER

THE *Moore* COMPANY

ARRANGEMENT M
MANUAL ADJUSTMENT

CLASS 5000