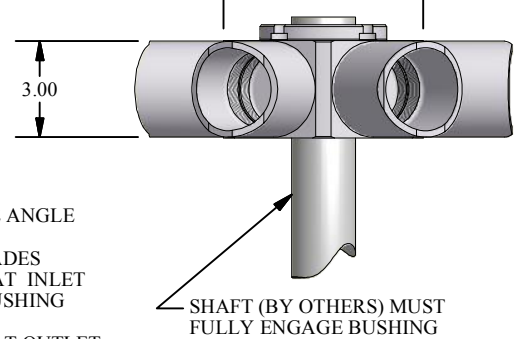
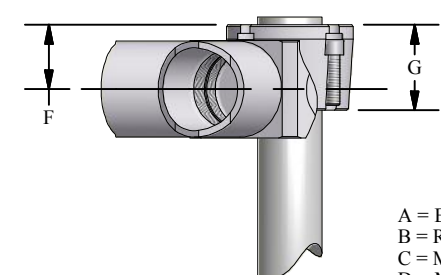
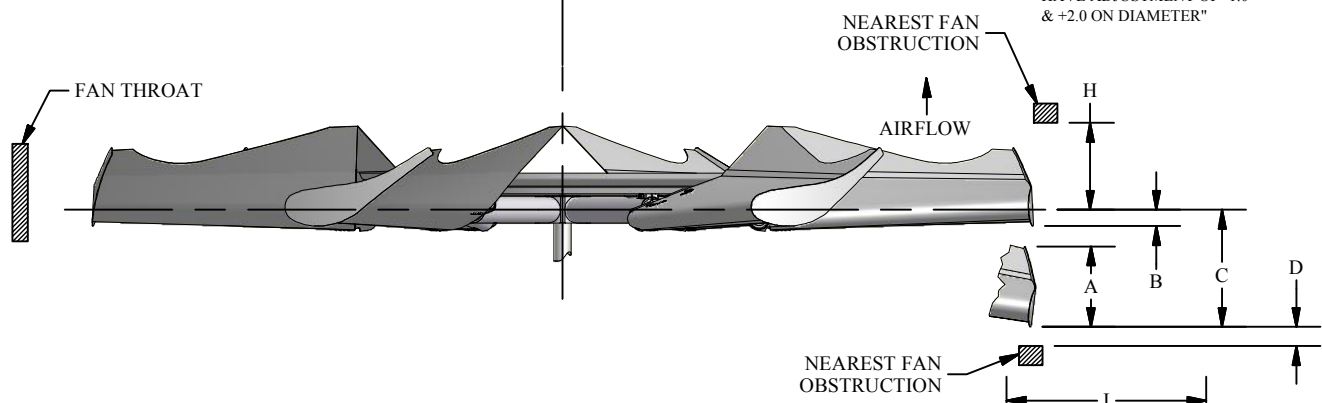


NOTE 1:  
MAXIMUM FAN DIAMETER (BLADES  
HORIZONTAL - AS SHIPPED) EQUALS  
NOMINAL FAN DIAMETER. ADJUSTMENT  
OF ±1.5 INCHES, POSSIBLE AT  
INSTALLATION

\*BLADES WITH ATEX TIPS  
HAVE ADJUSTMENT OF -1.0"  
& +2.0 ON DIAMETER"



- A = BLADE TIP THICKNESS @ 19° BLADE ANGLE
- B = RUNNING POSITION OF BLADES
- C = MAXIMUM DROOP POSITION OF BLADES
- D = MINIMUM OBSTACLE CLEARANCE AT INLET
- F = CENTERLINE OF FAN TO BASE OF BUSHING
- G = BUSHING OVERALL HEIGHT
- H = MINIMUM OBSTACLE CLEARANCE AT OUTLET
- I = NOMINAL MECHANICAL HUB DIAMETER
- L = MAX. BUSHING TORQUE FT. LBS.
- # = WITH S.A.E. STANDARD SQUARE KEYWAY
- \* = WITH SHALLOW KEYWAY IN BUSHING
- ° = MAX METRIC BORE WITH STANDARD KEYWAY

NOTE:  
BUSHING AND/OR AIR SEAL CAN  
BE INSTALLED ON INLET OR  
OUTLET SIDE OF FAN

WITH FAN OPERATING  
AT 12000 FT: MINUTE  
BLADE TIP SPEED

PERCENT BLADE  
LOADING

DIA	100%		75%		C	D	H
	A	B	A	B			
8'	7.5"	5.1"	4.8"	5.8"	2.0"	14.0"	
9'	7.5"	5.7"	5.3"	6.9"	2.0"	14.0"	
10'	7.5"	6.5"	5.9"	8.1"	2.0"	14.0"	
11'	7.5"	7.5"	6.7"	9.6"	2.0"	14.0"	
12'	7.5"	8.6"	7.5"	11.4"	2.0"	14.0"	
13'	7.5"	9.9"	8.5"	13.3"	2.0"	14.0"	
14'	7.5"	11.3"	9.5"	15.4"	2.0"	14.0"	
15'	7.5"	12.8"	10.7"	17.8"	2.0"	14.0"	
16'	7.5"	14.5"	12.0"	20.4"	2.0"	14.0"	

MAX BLADES	BUSHING TYPE	MAX # BORE	MAX * BORE	MAX ° BORE	I	F	G	L
8	U	2.750"	2.938"	75	9"	2.0"	2.7"	4000
10	U	2.750"	2.938"	75	12"	2.0"	2.7"	4000
8	W	3.750"	4.000"	100	9"	2.2"	2.8"	7300
10	W	3.750"	4.000"	100	12"	2.2"	2.8"	7300
8	X	3.750"	4.000"	100	9"	2.2"	4.0"	9800
10	X	3.750"	4.000"	100	12"	2.2"	4.0"	9800
10	Z	5.000"	5.500"	140	12"	2.2"	4.0"	18000



# SERIES 48 STANDARD HUB EXTENDED CHORD HD FAN-RIGHT HAND ROTATION