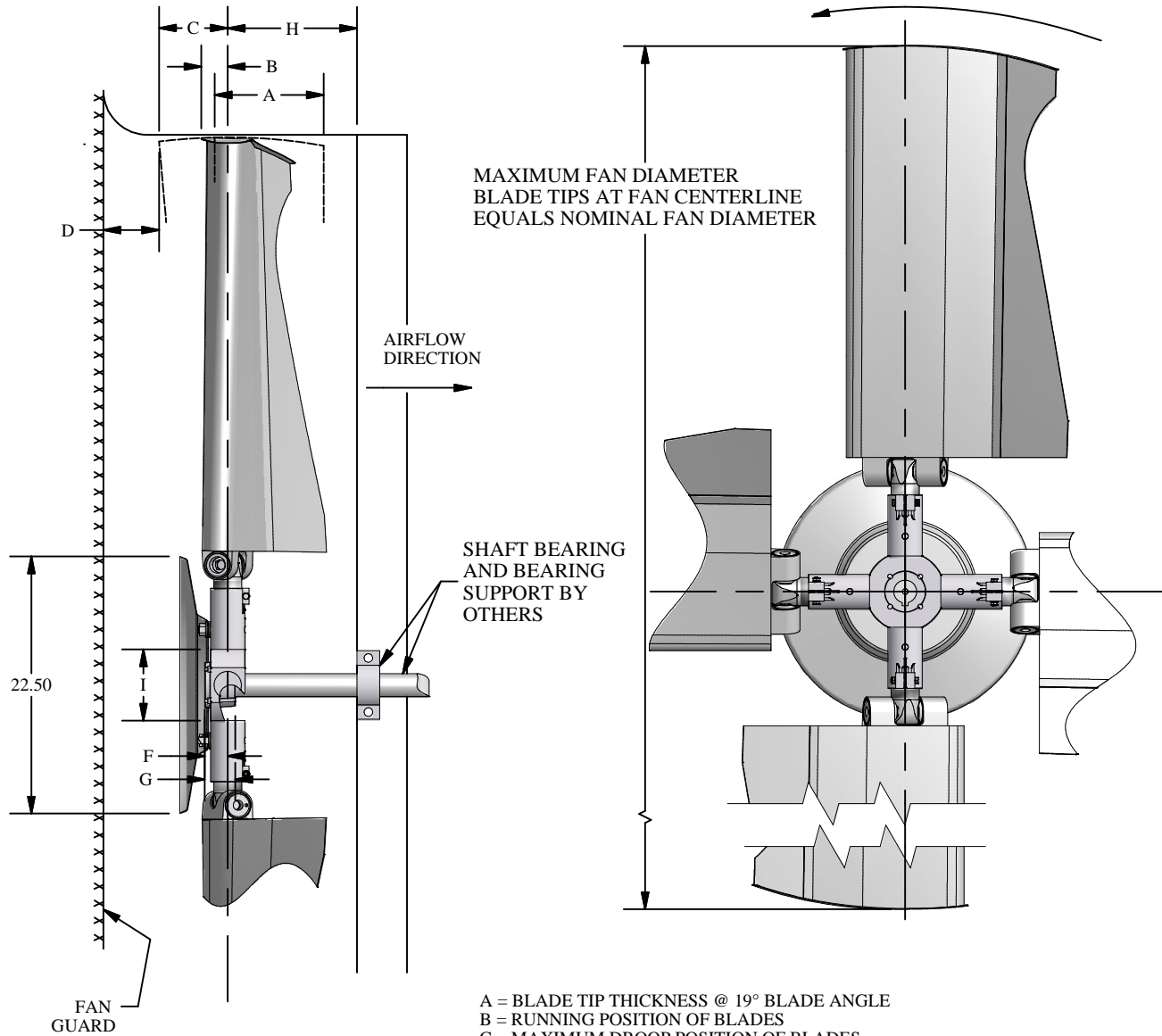


COUNTER-CLOCKWISE ROTATION
(FAN BLOWING IN OBSERVER'S FACE)
LEFT HAND BLADES



- A = BLADE TIP THICKNESS @ 19° BLADE ANGLE
- B = RUNNING POSITION OF BLADES
- C = MAXIMUM DROOP POSITION OF BLADES
- D = MINIMUM OBSTACLE CLEARANCE AT INLET
- F = CENTERLINE OF FAN TO BASE OF BUSHING
- G = BUSHING OVERALL HEIGHT
- H = MINIMUM OBSTACLE CLEARANCE AT OUTLET
- I = NOMINAL MECHANICAL HUB DIAMETER
- L = MAX . BUSHING TORQUE FT. LBS.
- # = WITH S.A.E. STANDARD SQUARE KEYWAY
- * = WITH SHALLOW KEYWAY IN BUSHING
- ° = MAX METRIC BORE WITH STANDARD KEYWAY

WITH FAN OPERATING
AT 12000 FT: MINUTE
BLADE TIP SPEED
PERCENT BLADE
LOADING

DIA	A	PERCENT BLADE LOADING		C	D	H	MAX BLADES	BUSHING TYPE	MAX # BORE	MAX * BORE	MAX ° BORE	I	F	G	L
		100%	75%												
5'	7.5"	4.5"	4.4"	4.8"	2.0"	14.0"	6	U	2.750"	2.938"	75	7"	2.0"	2.7"	4000
6'	7.5"	4.9"	4.7"	5.5"	2.0"	14.0"									
7'	7.5"	5.1"	5.1"	6.4"	2.0"	14.0"									
8'	7.5"	5.6"	5.6"	7.5"	2.0"	14.0"									



SERIES 24 HD FAN EXTENDED CHORD LEFT HAND ROTATION