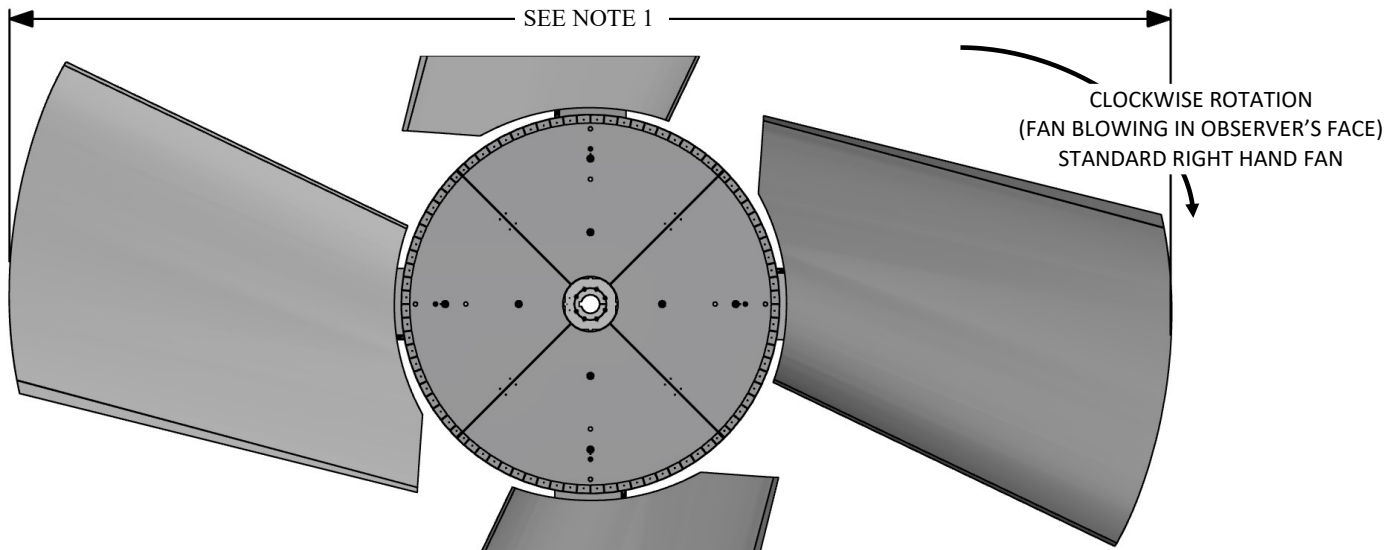


# CLASS 10000 MAG SERIES 84

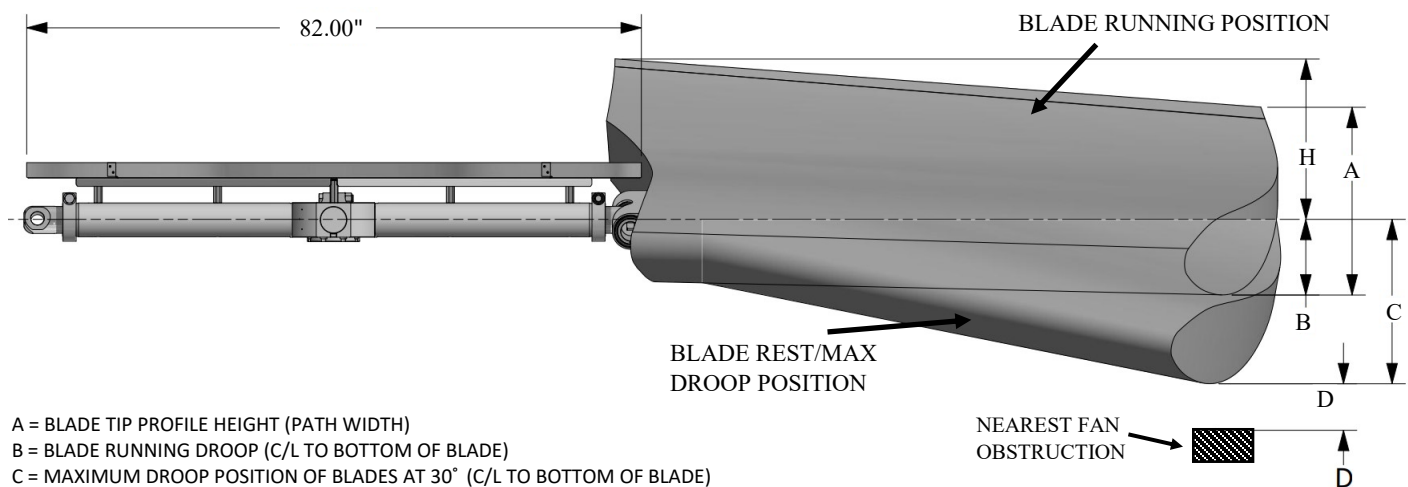
RH ROTATION

*Moore*  
FANS



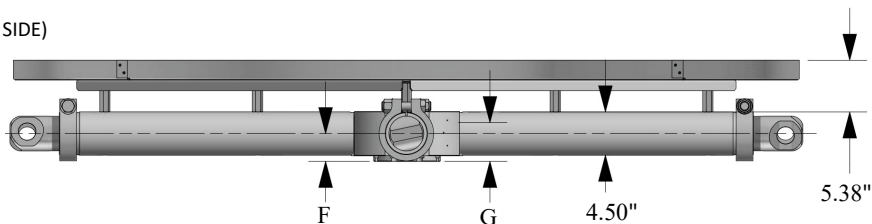
**NOTE 1:**

MAXIMUM FAN DIAMETER EQUALS NOMINAL FAN DIAMETER.  
ADJUSTMENT OF  $\pm 1.5$  INCHES POSSIBLE AT INSTALLATION



- A = BLADE TIP PROFILE HEIGHT (PATH WIDTH)
- B = BLADE RUNNING DROOP (C/L TO BOTTOM OF BLADE)
- C = MAXIMUM DROOP POSITION OF BLADES AT 30° (C/L TO BOTTOM OF BLADE)
- D = MINIMUM OBSTACLE CLEARANCE AT INLET
- F = CENTERLINE OF FAN TO BASE OF BUSHING (STANDARD HUB WITHOUT EXTENSION)
- G = BUSHING OVERALL HEIGHT
- H = MAXIMUM HEIGHT OF BLADE AT 25° (C/L TO AIR OUTLET SIDE)
- L = MAX . BUSHING TORQUE FT. LBS.
- # = WITH S.A.E. STANDARD SQUARE KEYWAY
- \* = WITH SHALLOW KEYWAY IN BUSHING
- o = MAX METRIC BORE WITH STANDARD KEYWAY

BUSHING AND/OR AIR SEAL  
CAN BE INSTALLED ON INLET  
OR OUTLET SIDE OF FAN



SHAFT (BY OTHERS) MUST  
FULLY ENGAGE BUSHING

|  |       |       |       |       |       |       |    |       |  |                 |                  |                  |     |      |      |                  |   |             |   |  |                          |  |  |  |  |  |  |  |
|--|-------|-------|-------|-------|-------|-------|----|-------|--|-----------------|------------------|------------------|-----|------|------|------------------|---|-------------|---|--|--------------------------|--|--|--|--|--|--|--|
| <div>WITH FAN OPERATING AT<br/>12000 FT/MINUTE BLADE TIP SPEED</div> |       |       |       |       |       |       |    |       | <div>SHAFT (BY OTHERS) MUST<br/>FULLY ENGAGE BUSHING</div> |                 |                  |                  |     |      |      |                  |   |             |   |  |                          |  |  |  |  |  |  |  |
|  |       |       |       |       |       |       |    |       |  |                 |                  |                  |     |      |      |                  |   | BLADE ANGLE |   |  | PERCENT BLADE<br>LOADING |  |  |  |  |  |  |  |
|  |       |       |       |       |       |       |    |       |  |                 |                  |                  |     |      |      |                  |   |             |   |  |                          |  |  |  |  |  |  |  |
| 15°  |       |       | 20°   | 25°   | 100%  | 75%   |    |       |  |                 |                  |                  |     |      |      |                  |   |             |   |  |                          |  |  |  |  |  |  |  |
| DIA  | A     |       |       | B     |       | C     | D  | H     | MAX<br>BLADES  | BUSHING<br>TYPE | MAX<br>#<br>BORE | MAX<br>*<br>BORE |     |      |      | MAX<br>o<br>BORE | F | G           | L |  |                          |  |  |  |  |  |  |  |
| 21'  | 27.4" | 33.0" | 38.8" | 28.0" | 28.0" | 32.0" | 6" | 34.7" | 8  | Z               | 5.000"           | 5.500"           | 140 | 3.7" | 4.0" | 18000            |   |             |   |  |                          |  |  |  |  |  |  |  |