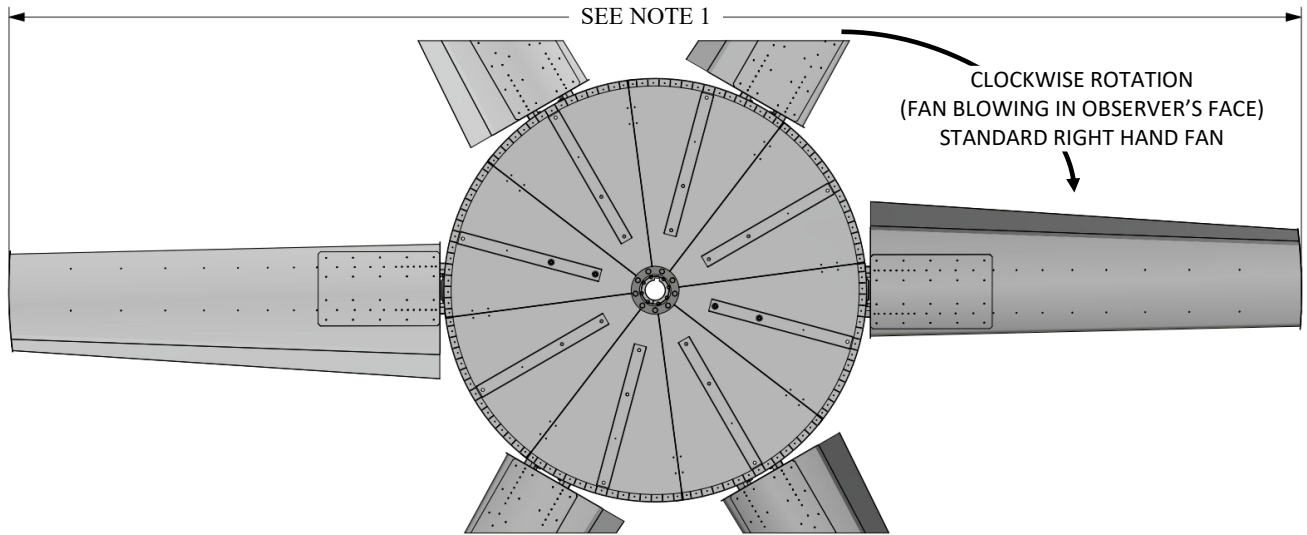
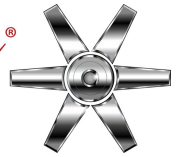
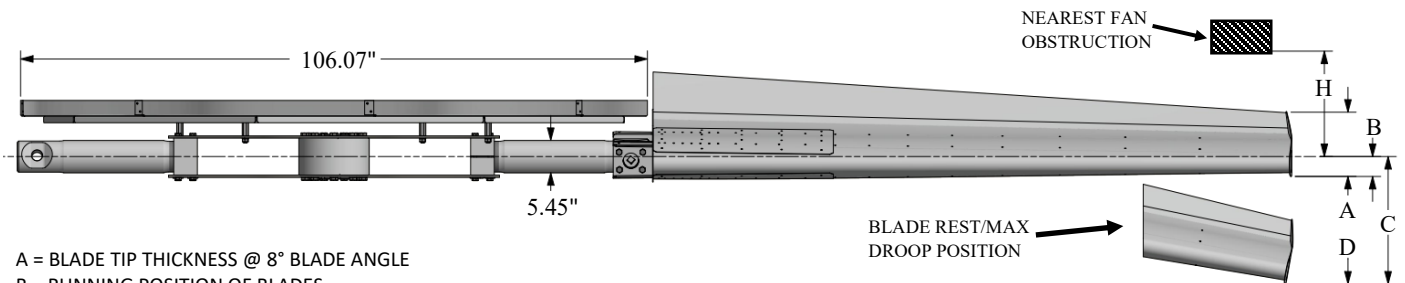


CLASS 20000 HD SERIES 108

STANDARD HUB, RH ROTATION

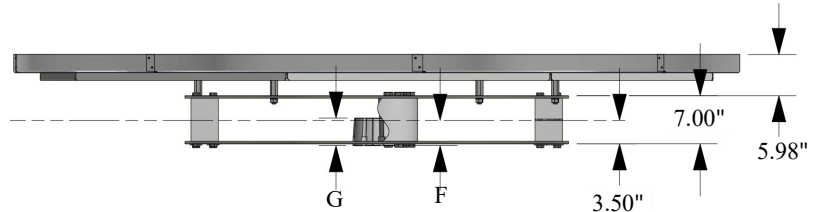


NOTE 1:
 MAXIMUM FAN DIAMETER EQUALS NOMINAL FAN DIAMETER.
 ADJUSTMENT OF ±1.5 INCHES* POSSIBLE AT INSTALLATION
 *BLADES WITH ATEX TIPS HAVE ADJUSTMENT OF -1.0" & +2.0"
 ON DIAMETER



- A = BLADE TIP THICKNESS @ 8° BLADE ANGLE
- B = RUNNING POSITION OF BLADES
- C = MAXIMUM DROOP POSITION OF BLADES
- D = MINIMUM OBSTACLE CLEARANCE AT INLET
- F = CENTERLINE OF FAN TO BASE OF BUSHING
- G = BUSHING OVERALL HEIGHT
- H = MINIMUM OBSTACLE CLEARANCE AT OUTLET
- L = MAXIMUM BUSHING TORQUE FT. LBS.
- # = WITH S.A.E. STANDARD SQUARE KEYWAY
- * = WITH SHALLOW KEYWAY IN BUSHING
- o = MAX METRIC BORE WITH STANDARD KEYWAY

HUB/BUSHING DETAIL



WITH FAN OPERATING AT 12000 FT/MINUTE BLADE TIP SPEED

DIA	BLADE ANGLE	PERCENT BLADE LOADING		C	D	H
		100%	75%			
27.0'	7.5"	2.4"	1.9"	3.5"	15.0"	20.0"
28.0'	7.5"	3.0"	2.3"	4.3"	15.0"	20.0"
29.0'	7.5"	3.6"	2.8"	5.3"	15.0"	20.0"
30.0'	7.5"	4.4"	3.3"	6.4"	15.0"	20.0"
31.0'	7.5"	5.2"	4.0"	7.6"	15.0"	20.0"
32.0'	7.5"	6.2"	4.7"	9.0"	15.0"	20.0"
33.0'	7.5"	7.2"	5.5"	10.6"	15.0"	20.0"
34.0'	7.5"	8.4"	6.4"	12.4"	15.0"	20.0"
35.0'	7.5"	9.7"	7.4"	14.3"	15.0"	20.0"

MAX BLADES	BUSHING TYPE	MAX # BORE	MAX * BORE	MAX o BORE	F	G	L
12	Z	5.000"	5.500"	140	3.7"	4.0"	18000