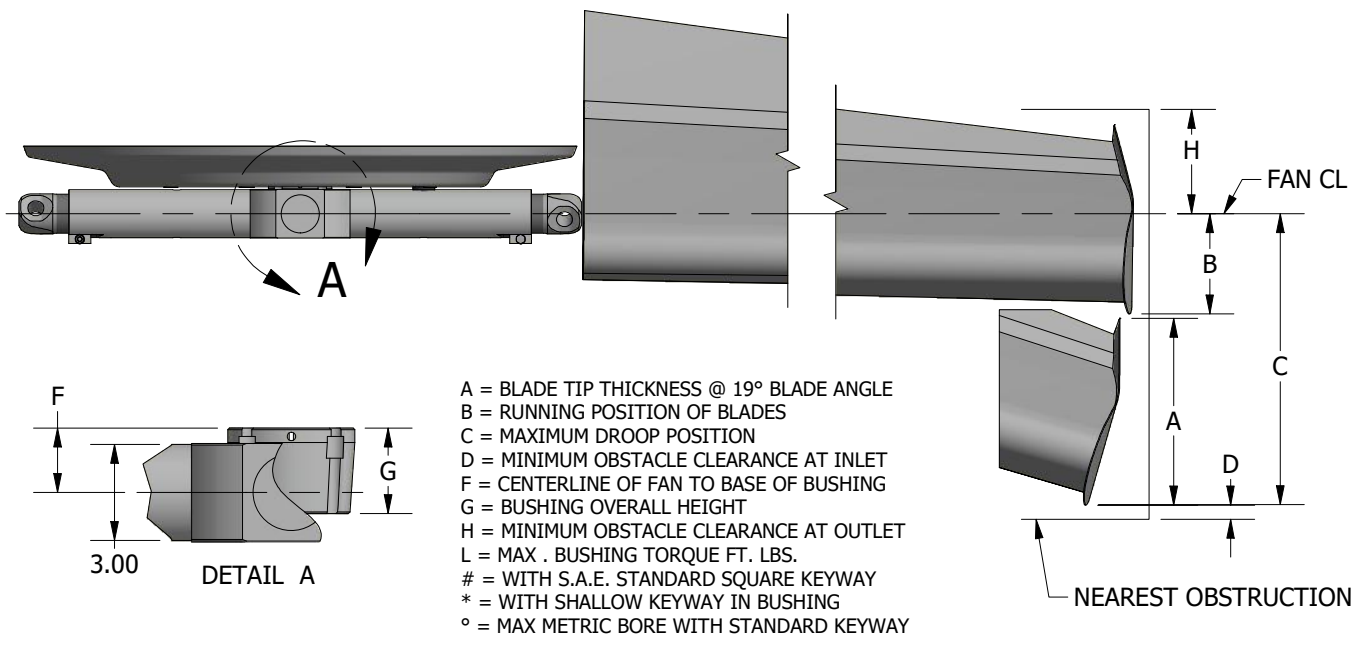


BLADES ARE NOT TO SCALE

NOTE 1:  
 MAXIMUM FAN DIAMETER (BLADES HORIZONTAL - AS SHIPPED) EQUALS NOMINAL FAN DIAMETER. ADJUSTMENT OF ±1.5 INCHES\* POSSIBLE AT INSTALLATION



DIA	BLADE LOAD					
	A	B	B	C	D	H
7'	14.9"	6.2"	5.8"	7.0"	4.0"	16"
8'	14.2"	6.8"	6.2"	7.9"	4.0"	16"
9'	13.5"	7.5"	6.7"	9.0"	4.0"	16"
10'	12.9"	8.3"	7.3"	10.3"	4.0"	16"
11'	12.2"	9.2"	7.9"	11.8"	4.0"	16"
12'	11.5"	10.3"	8.7"	13.5"	4.0"	16"
13'	10.8"	11.4"	9.5"	15.2"	4.0"	16"

MAX BLADES	BUSHING TYPE	F	G	L	MAX * BORE	MAX # BORE	MAX ° BORE
6	U	2.0"	2.7"	4000	2.938"	2.750"	75
6	W	2.2"	2.8"	7300	4.000"	3.750"	100



## SERIES 24 HD FAN XC RIGHT HAND ROTATION