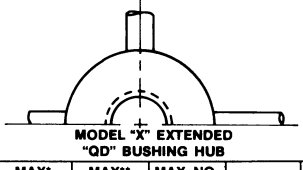
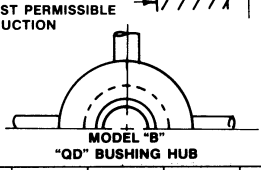


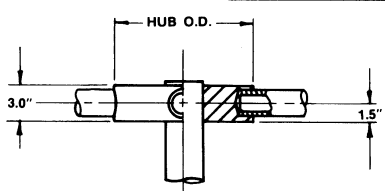
HUB O.D.	MAX. BORE	MAX. NO. BLADES
8.0"	3.000"	6
9.0"	4.000"	7



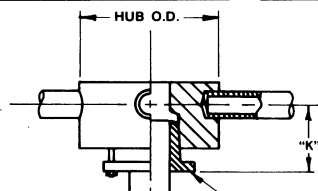
HUB O.D.	MAX. BORE	MAX. BORE	MAX. NO. BLADES	BUSHING	DIM. "K"
8.0"	2.313	2.688" (60 mm)	6	SF	5.3"
8.0"	2.875	3.50" (80 mm)	6	E	5.5"
9.0"	2.875	3.50" (80 mm)	7	E	5.5"



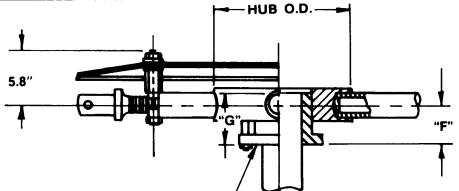
HUB O.D.	MAX. BORE	MAX. BORE	MAX. NO. BLADES	BUSHING	DIM. "F"	DIM. "G"
8.0"	2.313	2.688" (60 mm)	6	SF	2.5"	2.1"
9.0"	2.313	2.688" (60 mm)	7	SF	2.5"	2.1"
9.0"	2.875	3.50" (80 mm)	7	E	2.8"	2.7"



SHAFT BY OTHERS SHOULD GO COMPLETELY THROUGH HUB OR "QD" BUSHING



\*MAXIMUM BORE DIMENSIONS ARE WITH U.S. STANDARD SQUARE KEY  
 \*\*MAXIMUM BORE DIMENSIONS ARE WITH U.S. STANDARD SHALLOW KEYWAY



MODEL "QD" BUSHING

LETTER DIMENSIONS MAY VARY WITH BLADE ANGLE AND LOADING

NOTES		WITH FAN OPERATING AT 12000 FT./MINUTE BLADE TIP SPEED						
		PERCENT OF BLADE LOAD						
		FAN DIA.	DIM A	DIM B		DIM C	DIM D	DIM E
				100%	75%			
		5"	5.2"	1.9"	1.7"	3.2"	1.0"	.07"
		6"	4.4"	2.2"	1.9"	3.9"	1.2"	.09"
		7"	4.0"	2.7"	2.3"	4.5"	1.4"	.11"
		8"	3.2"	3.2"	2.6"	5.2"	1.6"	.14"
		9"	2.5"	3.8"	3.0"	5.8"	1.8"	.17"
		10"	2.1"	4.4"	3.5"	6.5"	2.0"	.20"
		11"	1.9"	5.1"	4.1"	7.2"	2.2"	.24"
		12"	1.7"	6.0"	4.7"	7.9"	2.4"	.30"

SERIES 33 PRESSURE BLOWER



MANUAL ADJUSTMENT ARRANGEMENT M

CLASS 5000