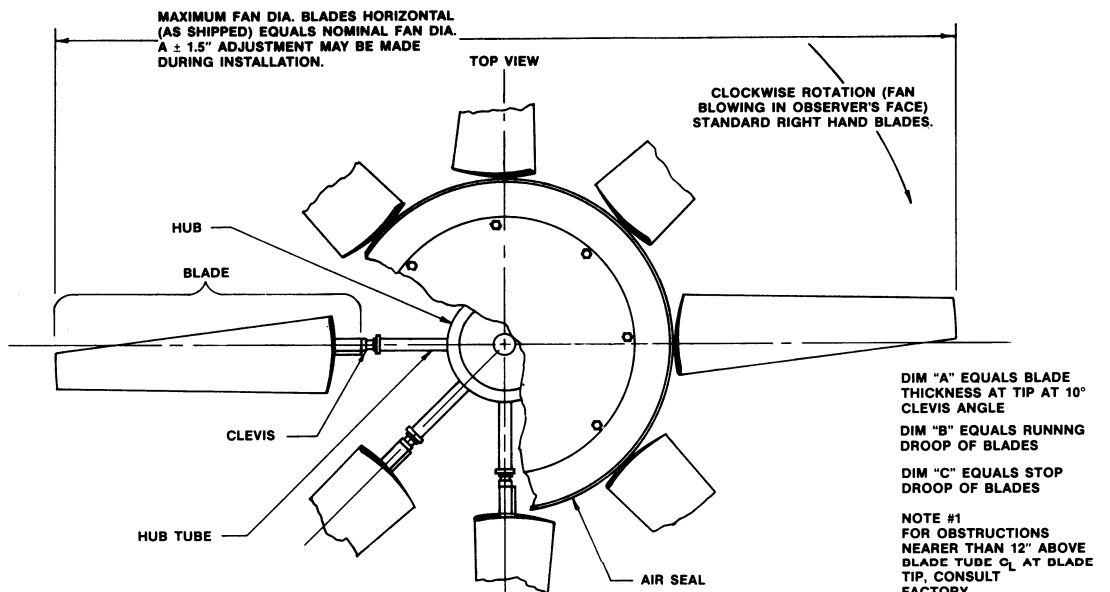
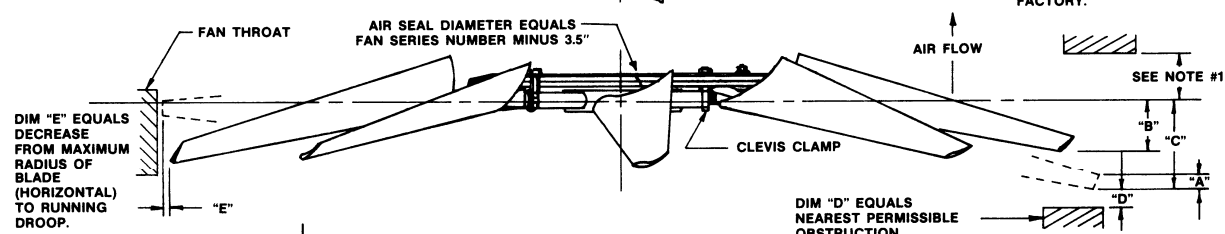


CLASS 5000 12000 RPM 60-0-1420-020

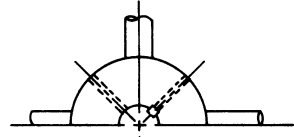


DIM "A" EQUALS BLADE THICKNESS AT TIP AT 10° CLEVIS ANGLE  
 DIM "B" EQUALS RUNNING DROOP OF BLADES  
 DIM "C" EQUALS STOP DROOP OF BLADES  
 NOTE #1  
 FOR OBSTRUCTIONS NEARER THAN 12" ABOVE BLADE TUBE CL AT BLADE TIP, CONSULT FACTORY.



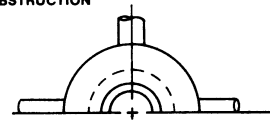
DIM "E" EQUALS DECREASE FROM MAXIMUM RADIUS OF BLADE (HORIZONTAL) TO RUNNING DROOP.

DIM "D" EQUALS NEAREST PERMISSIBLE OBSTRUCTION



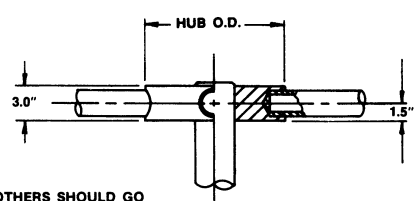
MODEL "A" HUB STRAIGHT BORE

HUB O.D.	MAX. BORE	MAX. NO. BLADES
9.0"	4.00"	8
12.0"	5.50"	12

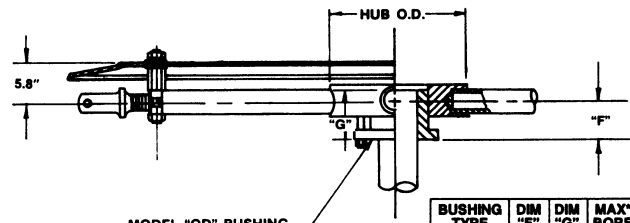


MODEL "B" "QD" BUSHING HUB

HUB O.D.	MAX. NO. BLADES	BUSHINGS AVAILABLE
9.0"	8	E
12.0"	12	E, J



SHAFT BY OTHERS SHOULD GO COMPLETELY THROUGH HUB OR "QD" BUSHING  
 \*MAXIMUM BORE DIMENSIONS ARE WITH U.S. STANDARD SQUARE KEY  
 \*\*MAXIMUM BORE DIMENSIONS ARE WITH U.S. STANDARD SHALLOW KEYWAY



MODEL "QD" BUSHING

BUSHING TYPE	DIM "F"	DIM "G"	MAX. BORE	MAX. BORE
E	2.8"	2.7"	2.875"	3.50"(80mm)
J	3.2"	4.6"	3.750"	4.50"(100mm)

LETTER DIMENSIONS MAY VARY WITH BLADE ANGLE AND LOADING

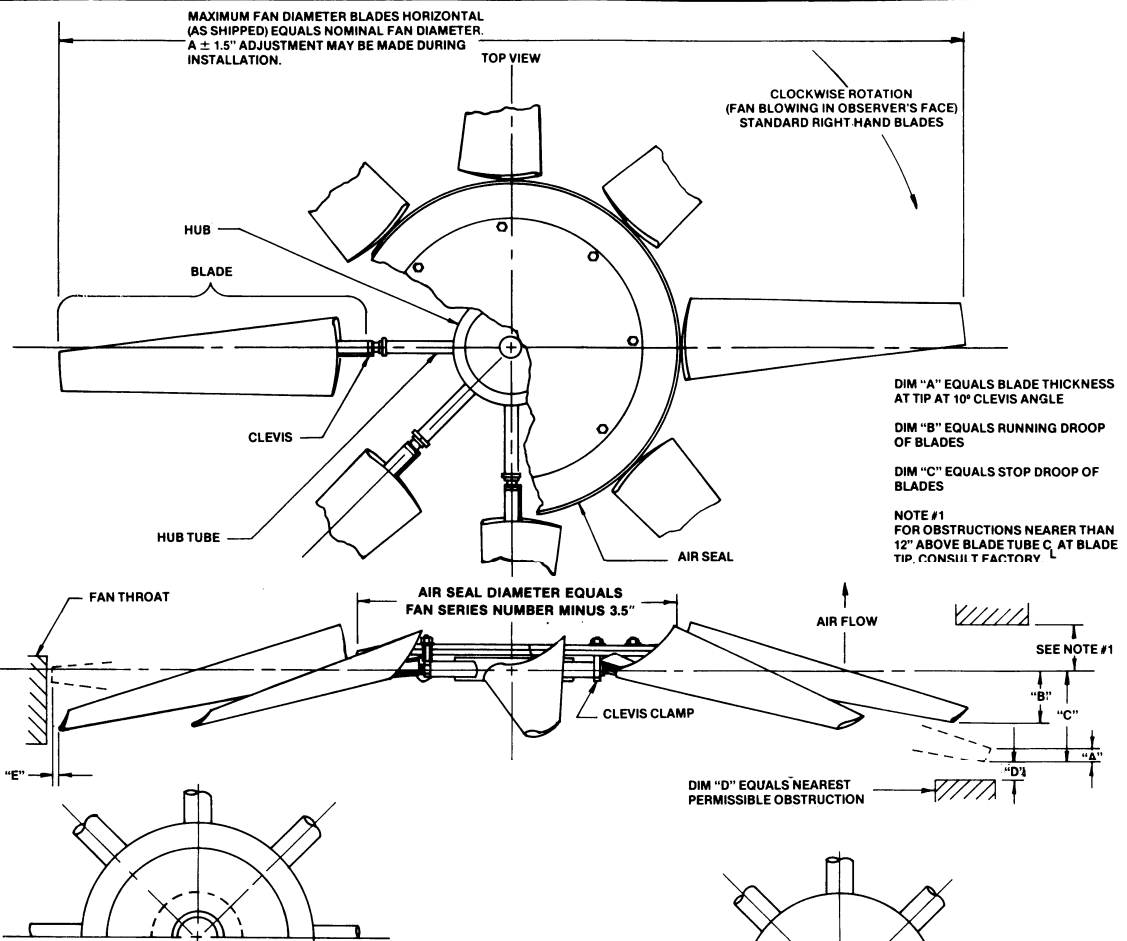
NOTES	WITH FAN OPERATING AT 12000 FT./MINUTE BLADE TIP SPEED						
			PERCENT OF BLADE LOAD		DIM C	DIM D	DIM E
	FAN DIA.	DIM A	100%	75%			
	9'	4.2"	4.1"	3.3"	8.7"	2.8"	.28"
	10'	3.9"	4.9"	4.0"	10.2"	3.1"	.34"
	11'	3.4"	5.8"	4.7"	11.8"	3.5"	.40"
	12'	3.1"	6.7"	5.3"	13.3"	4.0"	.48"
	13'	2.8"	7.7"	6.1"	14.9"	4.5"	.56"
	14'	2.4"	8.7"	6.9"	16.4"	4.9"	.66"
	15'	2.2"	9.9"	7.8"	18.0"	5.4"	.77"
	16'	2.0"	11.2"	8.8"	19.6"	5.9"	.89"

**SERIES 60 PRESSURE BLOWER**



ARRANGEMENT M  
 MANUAL ADJUSTMENT

CLASS 5000

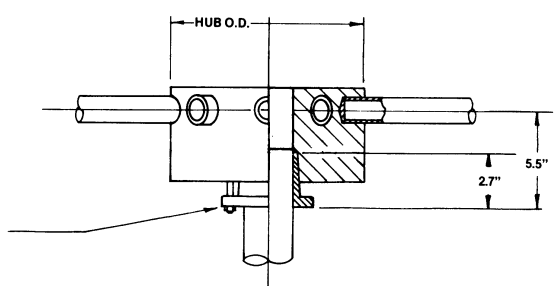
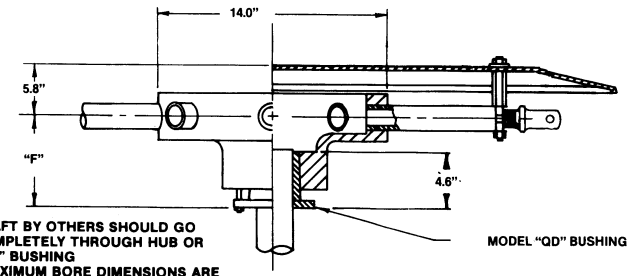


MODEL "B" EXTENDED "QD" BUSHING HUB

HUB O.D.	MAX. NO. BLADES	BUSHING	MAX.* BORE	MAX.** BORE	DIM. "K"
14"	12	J	3.75"	4.5" (100 MM)	8" OR 12"
17"	12	E	2.875"	3.5" (75 MM)	8"
17"	12	J	3.75"	4.5" (100 MM)	8"
24"	12	J	3.75"	4.5" (100 MM)	12"
24"	12	M	4.75"	5.5"	12"

MODEL "X" EXTENDED "QD" BUSHING HUB

HUB O.D.	MAX. NO. BLADES	BUSHING	MAX.* BORE	MAX.** BORE
9.0"	8	E	2.875"	3.50" (80mm)



LETTER DIMENSIONS MAY VARY WITH BLADE ANGLE AND LOADING

NOTES	WITH FAN OPERATING AT 12000 FT./MINUTE BLADE TIP SPEED						
	FAN DIA.	DIM A	PERCENT OF BLADE LOAD		DIM C	DIM D	DIM E
			100%	75%			
	9'	4.2"	4.1"	3.3"	8.7"	2.8"	.28"
	10'	3.9"	4.9"	4.0"	10.2"	3.1"	.34"
	11'	3.4"	5.8"	4.7"	11.8"	3.5"	.40"
	12'	3.1"	6.7"	5.3"	13.3"	4.0"	.48"
	13'	2.8"	7.7"	6.1"	14.9"	4.5"	.56"
	14'	2.4"	8.7"	6.9"	16.4"	4.9"	.66"
	15'	2.2"	9.9"	7.8"	18.7"	5.4"	.77"
	16'	2.0"	11.2"	8.8"	19.6"	5.9"	.89"

**SERIES 60 PRESSURE BLOWER**



ARRANGEMENT M  
MANUAL ADJUSTMENT

CLASS 5000